

## EnginFrame – The Grid Portal

The EnginFrame Grid Portal provides an efficient infrastructure to put **Grid-empowered applications on your corporate Intranet/Internet**.

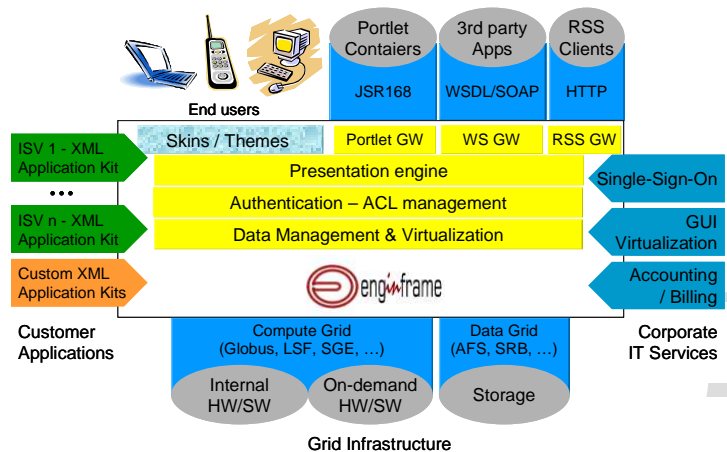
Application interfaces can be **tailored** to the specific users' skills or access rights. Users can therefore access and control their computing and engineering resources via an intuitive, standards compliant Web interface, virtually from anywhere using a standard Web browser.

EnginFrame's core advantage is the **evolutionary migration** to the Computing Portal paradigm. **Leveraging the existing investments** in scripting, it can mirror most established usage patterns and complement them with powerful and flexible Web-based enhancements.

With several advanced Web widgets specifically designed for compute- and data-intensive activities, controlling Grid-empowered applications becomes a **user-friendly** experience, **without sacrificing user productivity** when handling complex tasks. And with the remote file management built into EnginFrame unnecessary files transfers are avoided.

EnginFrame **architecture and security** features fit the most demanding IT environments, and can easily blend into Corporate Intranets/Extranets or link to existing Enterprise Portals or Single-Sign-On solutions. Integration with Citrix MetaFrame and Open Source GUI virtualization tools can also enhance the user experience and overall value of the Grid Portal as an **application delivery platform**.

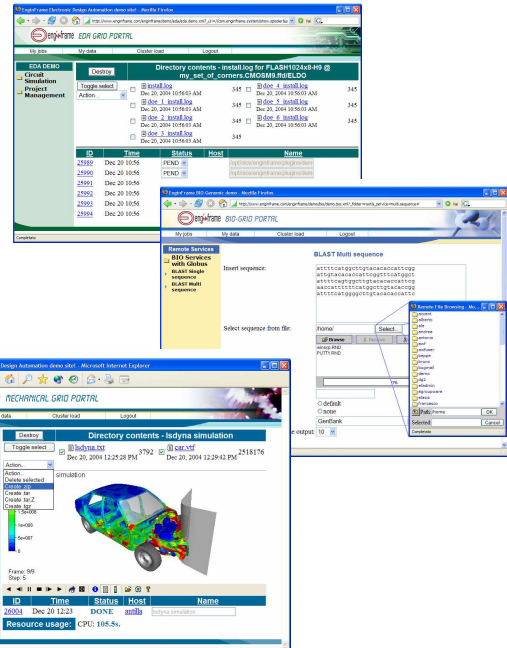
The Grid Portal natively supports industry-leading Grid solutions, including Platform LSF product suite, Sun GridEngine and the Globus Toolkit.



| Feature   | Benefits  |
|---|---|
| User-friendly, multi-protocol Web access to your Grid-empowered applications  | <ul style="list-style-type: none"> <li>– Enable black-box access from any Web-enabled client or WS-enabled application;</li> <li>– Broaden usage of the Grid, hiding the complexity to new and occasional users;</li> <li>– Reduce training and submission errors;</li> </ul>             |
| Evolutionary implementation with broad support for leading Grid middleware    | <ul style="list-style-type: none"> <li>– Secure and leverage your current investments and established methodologies;</li> <li>– Facilitate broad usage of advanced design practices;</li> <li>– Leverage power users' experience</li> </ul>   |
| Integrated and intuitive interface to submit/control jobs and present results | <ul style="list-style-type: none"> <li>– Simplify job tracking and enhance users' productivity</li> <li>– Collect accounting tags and other meta-information</li> <li>– Streamline data management and facilitate archiving</li> </ul>  |
| Fine-grained access control to local/remote users and partners                | <ul style="list-style-type: none"> <li>– Improve user mobility;</li> <li>– Collaborate with your supply chain while protecting your IP with a secure infrastructure;</li> <li>– Accelerate your projects and improve product quality by saving time in testing and validation;</li> </ul> |
| Modular plug-in architecture  | <ul style="list-style-type: none"> <li>– Easily adapt to IT changing needs and scenarios;</li> <li>– Facilitate know-how consolidation, exchange and re-use</li> </ul>  |

## Proven solution in many vertical markets

- Industrial Manufacturing – Automotive, Aerospace, General Manufacturing
- Electronics – EDA, Semiconductor Design
- Government, Research & Education
- Oil and Gas
- Biotechnology Industries / Research Institutes
- Telecom & Utilities
- On-demand, utility computing centers and ASPs



## Support and services

Platform, NICE and other partners are ready to provide professional support and services, aimed at accelerating prototyping, implementation and deployment of Grid Portal solutions. Services range from portal workshops, product trainings, pilot projects, tuning & consulting, up to full solution implementation.

## Supported Systems

| Architecture   | Java VM                           |
|--|-----------------------------------|
| Linux 2.4.x – RedHat A.S. 3<br>(Xeon – dual processor)                 | Sun J2SDK 1.3.1                   |
| Linux 2.4.x - RedHat, SuSE, Mandrake<br>(IA32 single processor, AMD64) | Sun J2SDK 1.3.1 - Sun J2SDK 1.4.2 |
| Linux 2.4.x - Debian<br>(IA64)   | Sun J2SDK 1.4.2                   |
| Solaris 8<br>(UltraSPARC)  | Sun J2SDK 1.3.1 - Sun J2SDK 1.4.2 |
| AIX 5.1<br>(PowerPC)   | IBM JDK 1.3.1                     |
| HP-UX 11<br>(HPPA, Itanium2)   | HP-UX Java SDK 1.3.1              |

## Supported Browsers

| Operating System    | Web browser                          |
|---------------------|--------------------------------------|
| Linux               | Netscape 7.2, Firefox 1.0            |
| Windows             | MSIE 5.0+, Netscape 7.2, Firefox 1.0 |
| Solaris, AIX, HP-UX | Netscape 7.0                         |

Selected functionality require client-side Java support in the browser (Native JVM 1.1, Microsoft JVM or Sun Java Plug-in).

## Supported Enterprise Portals / J2EE Containers

| Platform      | Version |
|---------------|---------|
| BEA WebLogic  | 8.1     |
| IBM WebSphere | 5.0     |