



EnginFrame – The Grid Portal

Management of engineering projects and services as well as effective administration and exploitation of complex and heterogeneous computing farms (DRM) or even more complex Grid implementations are challenging problems that may heavily impact on projects time-to-market performance.

Often the acceptance and usability of Grid/DRM solutions should be improved, the maintenance of the job placement environment is getting difficult over time, collaboration with customers or partners increases, new policies are introduced, the data management in the WAN has to be solved or increasing pressure comes from Enterprise-wide projects – these are example situations where Grid Portals can create important contributions to the IT-architecture and open the path to efficient enhancements to resolve future demands.

PDA). EnginFrame supports an open and evolutionary deployment to integrate the resources as they are needed and has proven its flexibility in content presentation and integration in corporate networks including adaption of most various CIs of different companies. The user role or project can be used to create the appropriate views and show only those features and options the user really needs.

The easy use, setup and manageability of the EnginFrame technology leads to a fast and flexible implementation of the corporate Grid Portal to present a consistent, integrated and graphical view of applications, information and resources available in the Grid. Users and administrators can control Grid applications as well as workload management, data management and reporting from within a single user interface, hiding the diversity and complexity of the native interfaces.

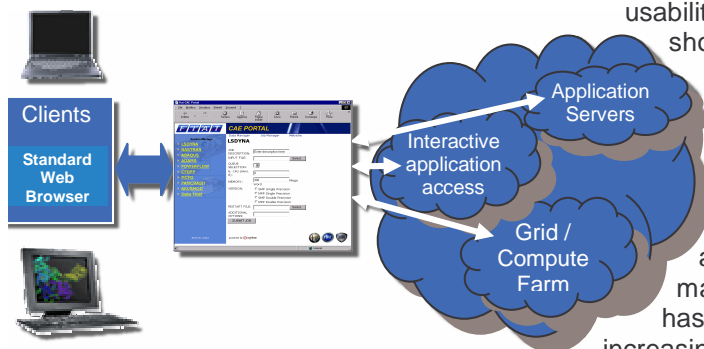
Product Description

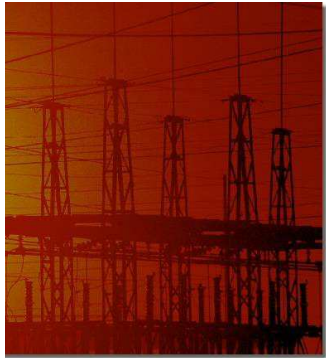
EnginFrame realizes efficient Inter-/Intranet access to the assets available. Computing resources, data, licenses, ... can be utilized and accessed by any client using any browser (e.g. Thin/Fat client, appliances,

Product Highlights

- **Universal and flexible access to your Grid infrastructure.**

EnginFrame provides easy access to Grid applications over intranet, extranet or the Internet using standard and secure Internet protocols.





- **Interface to the Grid in your organization.**

EnginFrame offers pluggable backend XML services to enable easy integration of existing applications and data services into the portal. Snap-In modules for all major Grid solutions including Platform Computing (LSF, LSF MultiCluster , ...), Globus, OpenPBS, Avaki, Sun GridEngine and OGSA compliant services provide easy interfaces to the existing computing infrastructure.

- **Open up your Grid while protecting your systems and Intellectual Property.**

You can give limited and controllable access to remote users and improve collaboration with partners while protecting your infrastructure and Intellectual Property (IP). This enables you to speed up design cycles while working with related departments or external partners and eases communication through a secure infrastructure.

- **Distributed Data Management and integrated graphical presentation of results.**

The remote file management built into EnginFrame avoids unnecessary file transfers and easily builds sets of reusable input-libraries. The seamless integration of graphical preview of results reduces data transfer as well.

Benefits to the Enterprise

- **Adapt easily to new business models.**

Working with partners is getting more important every day in our networked world. To achieve this, secure and easy to use interfaces to services and data are necessary which are provided by well design portal solutions.

- **Improve your resource usage.**

By lowering the threshold to use your computing resources and applications you can improve user productivity by hiding unnecessary application and platform specific interfaces behind an easy to use and familiar interface.

- **IT assets and projects methodology consolidation.**

Sites and branches are spread over the WAN; different companies have merged together; remote departments are joined or have to work closely; duplicate license pools and insufficient local resources – all these obstacles can be overcome deploying well defined and easy to use portal solutions.

- **Trend to generalized company-wide web solutions.**

With EnginFrame you can easily contribute and deliver up-to-date content for company-wide web portals designed in the corporate look and feel in addition to provide a wealth of properly focused and easy to access information for the management and project leaders.

System Requirements

EnginFrame has the following system requirements:

- Java 1.3.1 or higher, Apache 1.3.27 or higher / or Tomcat 4.1.24 or higher
- EnginFrame supports all major UNIX platforms, including, Compaq Tru64, HP-UX™, IBM AIX™, Linux on x86, and Sun Solaris™.

EnginFrame References

Among the many customers using EnginFrame to realize efficient Grid Portals are Accent, Audi, CERN, ENEA, Elasis, Ferrari, Fiat, Galileo, INFN, Shell, Siemens, ST Microelectronics.



NICE srl
Via Serra, 33 – 14020
Camerano Casasco (AT) – Italy
info@nice-italy.com
<http://www.nice-italy.com>